

SPRING SUMMER

2027



THE SPRING / SUMMER 2027 TRENDS FOR COLOR



S/S 2027



01



02



03

A liquid journey through the history of signs and ink, as primordial shapes of art, arriving to nowadays and projecting into the future. It is the connection to the ancestral, the relation with the present the transfer towards the future, the link between the people, centuries and eras. The color palettes are traversal for all the themes yet divided in three. Combinations from the same group can work in lighter or darker tones to obtain a more vibrant effect and or chromatically more interesting. The three palettes are contrasting and harmonious at the same time.

METAVISION

01

CRUSHED ROCK YELLOW JASPER
SPRING BOUQUET
ARCTIC SEAL
DREAMY GREEN
BIG DIPPER
DUSKY AQUA
CARBON

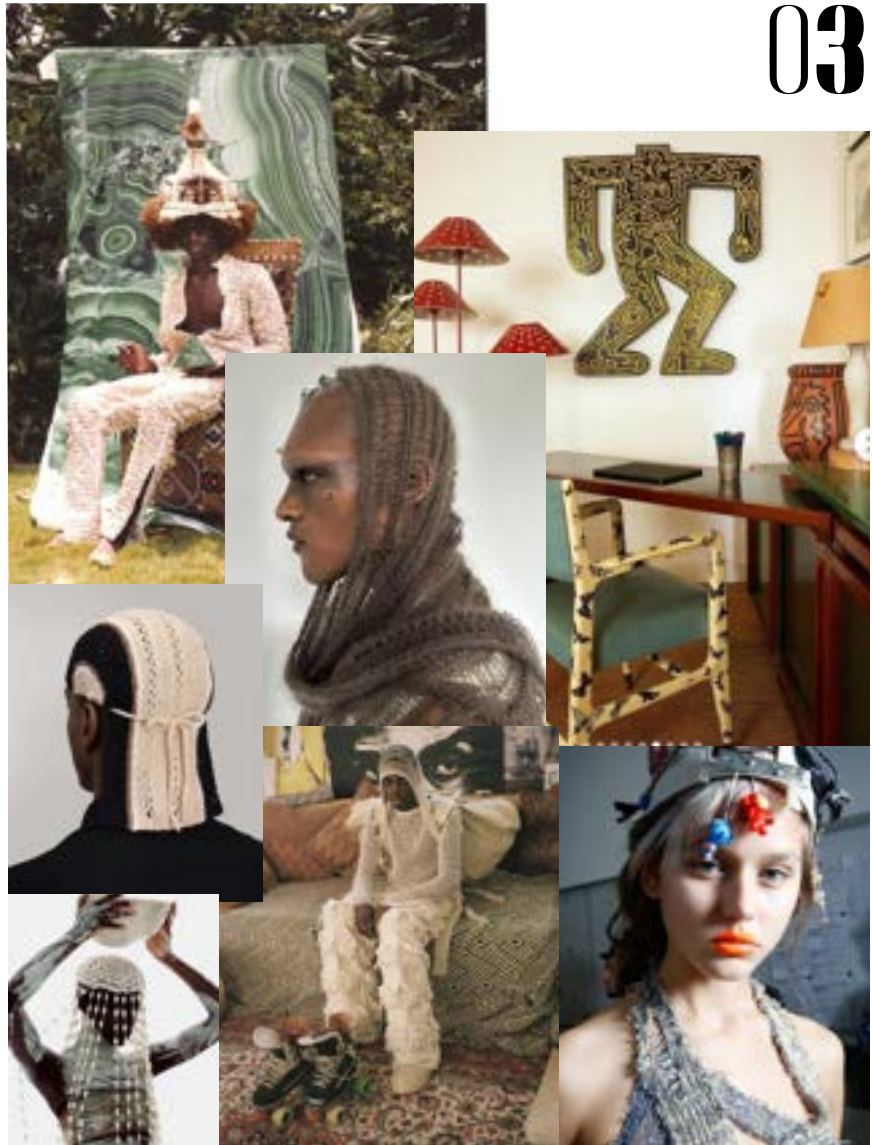
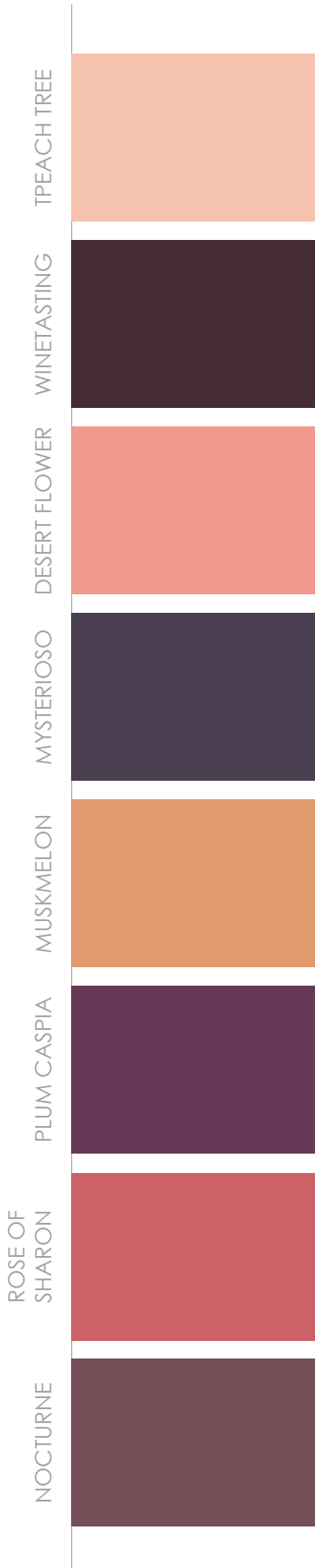


Cold ad digital palette. Cybernetic non organic synthetic colors inspired by the artificial world.

Detailed and refined designs that create "secondskin" effects, technical anatomical stripes to create more sculptural shapes with semi-glossy finishings.

PRIMALLINE

03



Warm, earthy, organic. Primordial, impulsive, burning. Red clay tones, mixed with mineral purples. Rustic and exaggerated, matte, chalky textures made of natural, dry hand-feel. made of natural, dry hand-feel. opaque yarns recall to scarification technique.